

PROTECT YOURSELF TODAY!

Tax enquiries can be costly and our expert support in dealing with these is not included in your normal accountancy fees. Spending a small amount now on our Tax Fee Protection means that you will receive complete support if HM Revenue & Customs (HMRC) targets you; we will manage your enquiry from start to finish and you will not need to worry about the cost.

“HMRC activity has increased significantly in recent months, with the number of new enquiries opened now exceeding pre-pandemic levels.

Purchasing our Tax Fee Protection ensures that if you are subject to enquiry by HMRC our fees are one less thing to worry about. We can defend you for as long as it takes to get the right result.”

Director, Bowen & Partners

Want to know more

If you have any questions relating to our Tax Fee Protection then don't hesitate to contact us.

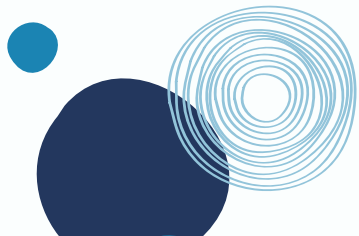


01249 720341

www.bowenaccounts.co.uk

Don't get stung by the cost of an HMRC enquiry!

Subscribing to our **Tax Fee Protection** will mean that we can represent you in the event of an HMRC enquiry at no extra cost . . . ensuring you get the best possible defence.



WE'RE HERE TO PROTECT YOU!

”

HMRC activity has increased significantly in recent months, with the number of new enquiries opened now exceeding pre-pandemic levels.

“

Why are HM Revenue & Customs (HMRC) investigating?

- In the UK we live in an environment whereby the taxpayer is responsible for assessing their own tax liability.
- HMRC opens enquiries to see if the taxpayer has paid the right amount of tax.
- HMRC now uses a sophisticated database called 'Connect' to start more than 80% of tax enquiries. Connect analyses over 55 billion pieces of data including land registry documents, social media account information and banking details.
- When opening enquiries HMRC can consider all aspects of taxation.

What could an enquiry involve?

- HMRC will write to you or visit your business premises.
- They will potentially want to review all your books and records or will ask for more detailed information about specific transactions on your Tax Return.
- At the end of the enquiry HMRC may look to raise an assessment for additional tax due.
- If you are subject to an enquiry we will respond to HMRC's requests for information and/or attend meetings with HMRC. We will provide our workings with detailed explanations, and we can dispute any assessment for additional tax due.

You can protect!

- If HMRC states its intention to investigate your tax payments don't panic ... call us, as your dedicated accountant we can provide the best defence.
- Our Tax Fee Protection will cover fees incurred translating the many complicated questions the taxman may pose, manage the entire conversation with the taxman, help you submit any required information and challenge HMRC's findings.
- The protection gives you the comfort of knowing that we can fully defend you at no extra cost if you fall under HMRC's spotlight.

Other benefits of this protection

As an additional benefit this protection provides complementary telephone access to business support advice lines from which advice can be obtained on:

- **Employment Law** – you can call regarding performance and absence management, TUPE, redundancies, calculating holiday entitlements, grievances, disciplinary processes and more.
- **Health & Safety** – advice on risk assessments, fire safety, first aid, RIDDOR and more.
- **General Legal Issues** – advice on any UK commercial or personal issues.

Reasons to take action

- HMRC enquiries can be random, and anyone can be targeted, even if you have done nothing wrong.
- The number of enquiries opened by HMRC has increased significantly in recent months.
- If you are selected for an enquiry we will represent you, ensuring you have the best possible defence.
- Our normal accountancy fees do not include the cost of dealing with enquiries, which can be costly and complex, even if no additional tax becomes due.
- For a relatively low cost our Tax Fee Protection protects against any fees we may incur dealing with HMRC enquiries.
- We strongly encourage you to protect against the risk of an HMRC enquiry.